



HYSUCAT
HYDROFOIL TECHNOLOGY



HYSUCAT, an acronym for Hydrofoil Supported Catamaran, is the combination of a distinctively designed hull and foil incorporating hydrofoil science and technology.

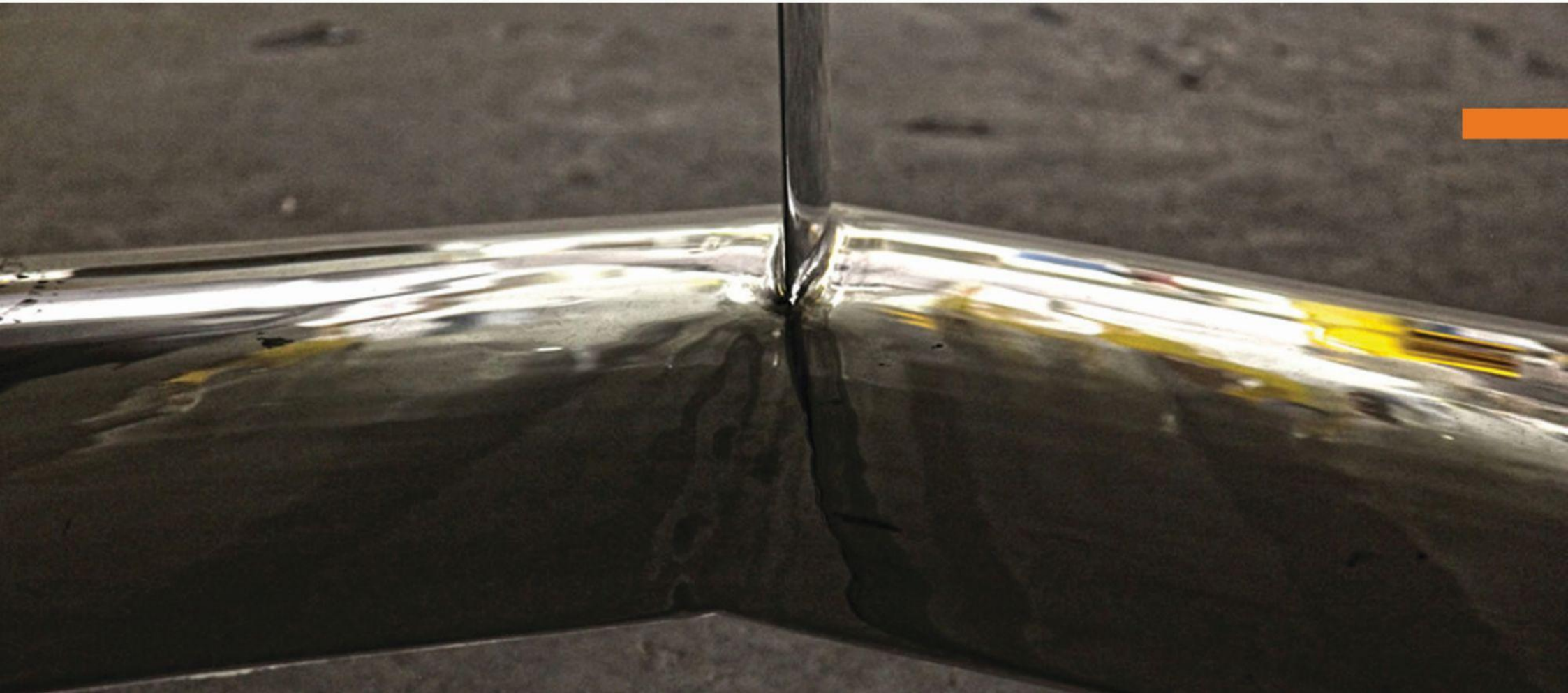


HYSUCAT TECHNOLOGY

The basic principle behind the Hysucat is an effective hydrofoil system in the tunnel between two demi-hulls. This consists of a main wing located in front of the length emphasis in keel height, supported by two smaller wings in the tunnel at the rear of the hull.

HYDROFOIL ADVANTAGES

- Higher top speed
- Improved sea keeping in rough seas
- Reduced fuel consumption
- Increased range due to lower fuel consumption
- Wave dampening
- Dry ride
- Improved load



HYSUCAT CC25



ABOUT

HYSUCAT 25' Center Console Sport Fisher is a stunning saltwater sport fishing boat, simply a masterpiece in its category. She offers the best features of a monohull and a catamaran combined yet made superior thanks to innovative hydrofoil technology.

Designed by renowned specialist Malan Conradie, the Hysucat patented, high-performance asymmetric catamaran is capable of delivering higher speed with less horsepower, a soft, comfortable, stable ride in waves or swells, and efficient, reduced fuel consumption.

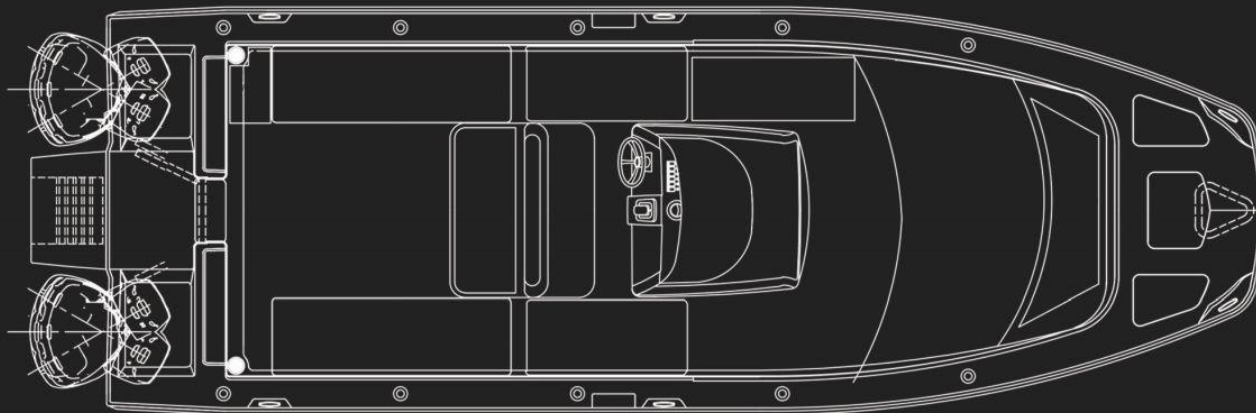
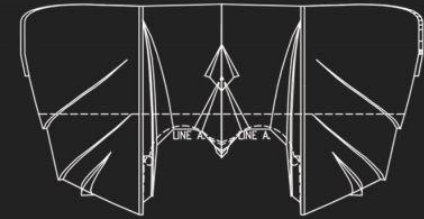
Tough, roomy, rugged yet comfortable, the Hysucat 25-foot Center Console offers plenty of storage and comfortable seating. With a 200-gallon fish box capacity, 160 gallons of fuel and integrated deck seating, this 25-foot boat is a luxurious fishing machine. Inside you'll find dual live-wells, lockable rod storage and a console with room for a marine head.

With a roomy 8-foot, 6-inch-wide beam, the boat can carry up to 10 passengers and has the capability to handle any bay chop. Though designed with fishing in mind, the Hysucat 25 CC is also fit for snorkeling and island hopping.



STANDARD LAYOUT

Hysucat CC 25' Sport Fisher



STANDARD SPECIFICATIONS

LOA – 25' (7.6 m)
Beam – 8'6" (2.6 m)
Draft – 16" (0.40 m)
Dry weight (with engines) – 4,600 pounds (2.08 metric tons)
Bridge clearance with hardtop – 9' (2.7 m)
Fuel capacity – 160 gal (605 liters)
Persons capacity – 10
Water capacity – 10 gal (38 liters)
Fish box capacity – 150 gal (568 liters)
Livewell capacity – 35 gal (130 liters)
Maximum HP – Twin 200 HP
Minimum HP – Twin 90 HP
Recommended HP – Twin 140 HP
Cruise speed – 32 Mph (28 knots)
Maximum speed – 61 Mph (53 knots)
Trailing height – 9'6" (2.9 m)

Standard Equipment

Hand Laid Vinyl Ester Construction
Foam Floatation, Coast Guard Standard
Anti-slip Self-draining Deck
Transom Entry Door
All Hardware is Made of 316-L Thru Bolted Stainless Steel
Stainless Steel Thru-Hull Fittings
Aluminum/Stainless Grab Rails
(3) Hydrofoils
Armstrong Breakaway Swim Ladder
(5) Total Dry Storage Areas
Dry Storage Areas in the Console (lockable)
East Access Storage Space Throughout the Boat
Helm Seats w/ Backrest
Console Recessed Hand Rails
Electronics Area that Accommodates 17" Display
Navigation LED
Bow and Stern Spreader Lights LED
LED Cockpit Courtesy Lights
Horn
Battery Select Switch
(3) Battery System
Enclosed Head/Storage Area in Console w/ Drain
5 Gallon Holding Tank Porta Potty w/Additional Pump Out
t

(1) Stainless Steel Porthole
Fiberglass T-top with 6 Rod Holders
Rod holders (4 on each side of the boat) – Port, Starboard, Gunnels
(2) Large Fish Boxes w/ Macerator Pump – 95 Gallon Aft Insulated Fish Boxes
(2) 25 Gallon Livewell w/Circulating Pump 500 Gal/Hour

(1) Self-draining Storage Compartments – 30 Gal. Port & Starboard
(2) Automatic Bilge Pumps (Total 1500 GPH)
(2) Fuel Tanks – 160 Gallon Total
Cockpit Freshwater Shower
Self-bailing Cockpit w/Cockpit Drains
Integrated Outboard Mounting System w/Swim Platform & Armstrong Ladder
Starboard and Port 3' Jumpseats Aft.
(1) Raw Water Wash-Down
Rub Rail - High Density PVC w/Stainless Steel Insert
Stainless Steel Propellers
(6) Cleats - Flush Mount (Pull Out)
Wrap Around Coaming Pads
(1) Bow Eye
(2) Stern Eyes
Anchor Locker w/ Drain
14 lbs. Danforth Anchor w/15'Chain, 300' (91m) Anchor Roller w/Cleat
Power Steering w/Stainless Steel Tilt Wheel

Options

LED Underwater Light Package (2)
Starboard & Port Seating w/ High/Low Table & Storage Underneath
Fusion Bluetooth Stereo System w/ 4 Marine Speakers
Casting Platform Insert w/ Cushions
Hull Color 1/2
Hull Color Full
Hull Matching T-Top Underside Color
Windshield Wiper/Washer
Taco 280 Grand Slam Outriggers w/15' Telescoping Poles
Integrated Battery Charger System
Lewmar Freefall Windlass w/300' Rode & 15' Chain
Heavy Duty Stainless Steel Lifting Eye

PERFORMANCE DATA

Test conditions:

Two Outboard Engines: SUZUKI SUZUKI DF200AP

Propellers: PowerTech 4 blades, 14,5"x24"

4 people on board

1/2 m waves and 10 knots backwind

RPM	SPEED		FUEL CONSUMPTION			RANGE
	Mph	Knots	Km/h	Mpg	Km/L	
650	3.73	3	6	4.44	1.88	700
1000	5.41	5	9	3.38	1.43	550
1500	7.77	7	12	2.52	1.07	400
2000	10.25	9	16	2.18	0.92	350
2500	18.02	16	29	3.00	1.27	480
3000	21.75	19	35	3.07	1.3	490
3500	29.83	26	48	3.34	1.41	530
4000	36.04	31	58	3.05	1.29	490
4500	41.01	36	66	2.73	1.16	435
5000	45.36	40	73	2.27	0.96	360
5500	48.47	42	78	2.00	0.85	320
6000	54.68	47	88	1.42	0.6	230
6500	61	53	99	1.30	0.55	200

HYSUCAT ADVANTAGES

- Less power required
- Better fuel efficiency
- Longer range
- Stable, smooth and dry ride i
- Improved load carrying capac
- Superior turning capabilitie
- Outstanding sea keeping
- Damping effect reduces fatig
- Extending longevity at sea
- Environmentally friendly: sm
- High speed performance with



HYSUCAT CC25



HYSUCAT CC25



HYSUCAT CC25



HYSUCAT CC25





HYSUCAT CC25



**7013 Hwy 92 East Bath, NC 27808 / E-mail: info@hysucat.com / Tel: 1-252-923-0430
www.hysucat.com**